

One Infrastructure. Endless Benefits.

Harness the power of the ibml Fusion™

If you're currently using multiple machines to process incoming mail, then you're also spending a ton on real estate, labor, IT and maintenance.

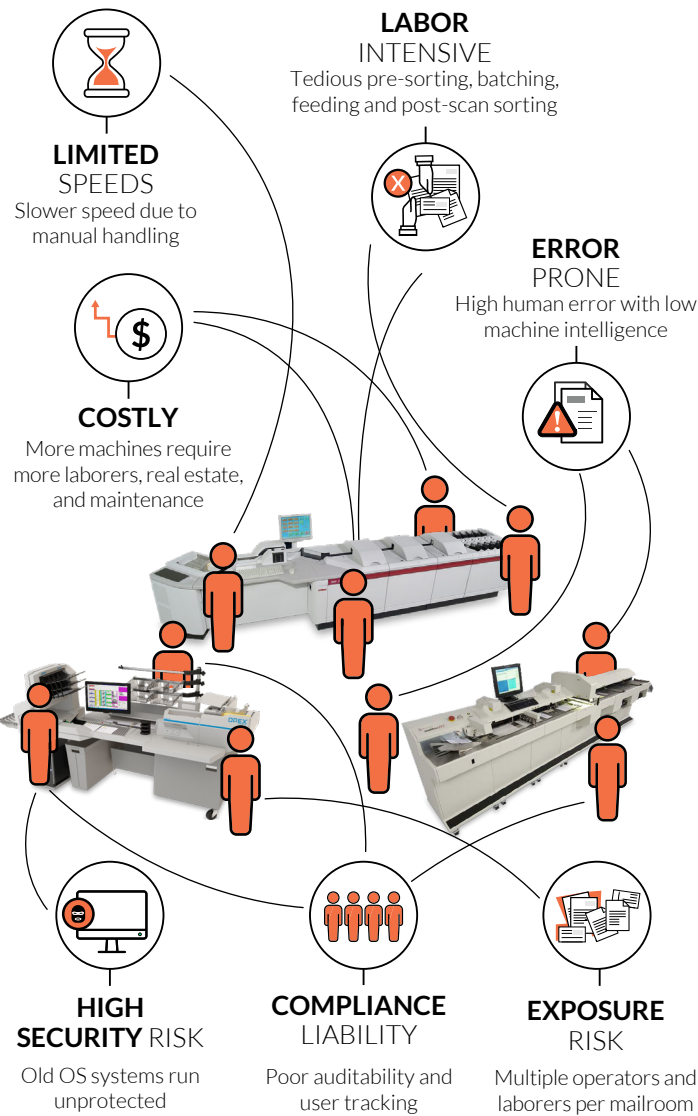
Why settle for that? There's now a way better way – one that allows you to modernize, downsize and eliminate excess costs.

See how the ibml Fusion streamlines your capture process to accelerate savings:

The Old Way

Multiple Processes = **Multiple Headaches**

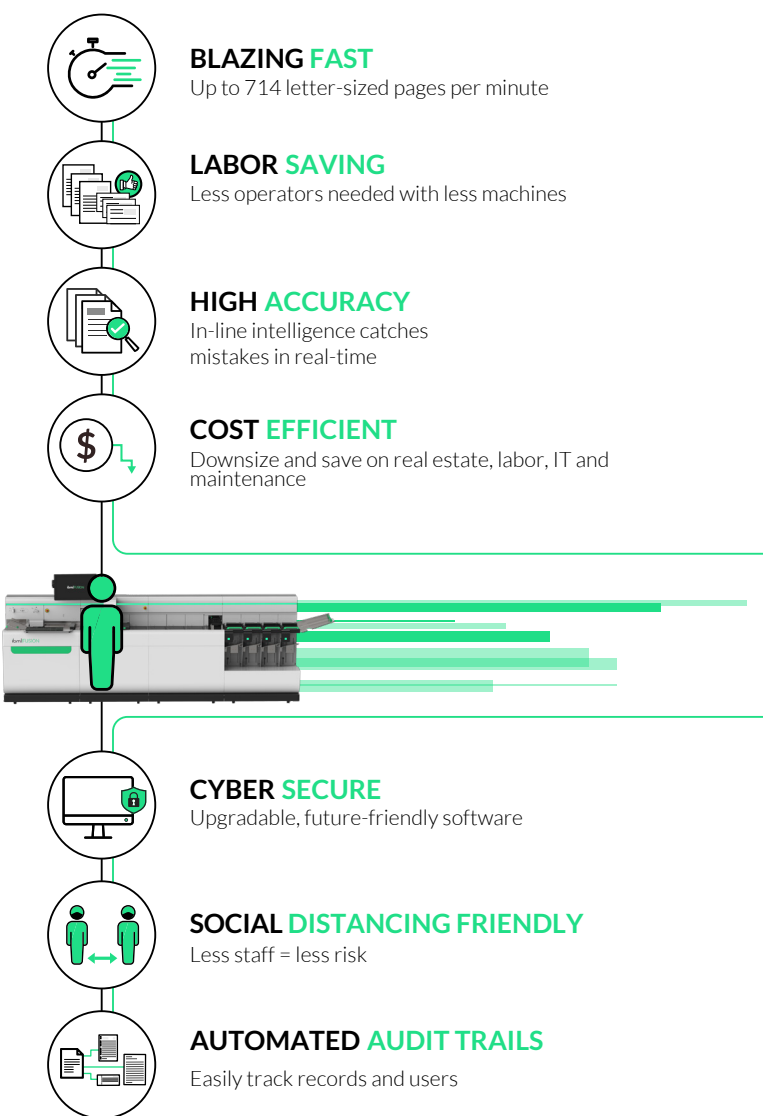
Most mailrooms today use multiple scanners to process large and small documents separately, slowing down the flow of information.



The Fusion

All Your Documents on **One Infrastructure**

Leap to the future and consolidate all your document sizes into one intelligent system that eliminates need for manual sorting.



of scanning costs is spent on pre- and post-scan processes.²



of surveyed businesses cite security as the main benefit of centralized document processing.³



Faster Than Anything In It's Class

1. "Is Your Business Ready to Go Paperless?" Konica Minolta | 2. "The Total Cost of Scanning: A Framework for Analysis and Improvement" ECM Connection. | 3. "Document Scanning and Capture: Local, Central, Outsources – What's Working Best?" AIMM

Fuse Your Processes. Fuel Your Productivity.
ibml Fusion Streamlines Capture from Start to Finish.

Setup a demo or get more details

